



LOOKING FOR A **SMART** SOLUTION?

Global supplier of Cosmetic Repair  
Products | Equipment | Training

[www.automotiverepairsystems.co.uk](http://www.automotiverepairsystems.co.uk)

# IT'S TIME TO GO GLOBAL

Having worked within the Smart Repair industry for over 25 years, we have seen Smart Repair evolve and grow rapidly in the automotive sector.

With the advancement in the quality of products and new techniques, Smart Repair is no longer a "touch in" service for trade only, it has become a skilled repair to a high standard still used in the trade but also being offered to retail customers, as well as being used by several insurance companies.

With the right tools in place Smart Repair has now turned into a lucrative business opportunity, this can be implemented into new or existing businesses, with help from either consultancy on a static or mobile business, training on new products, new techniques as well as marketing and health and safety.

Let us help give your business the tools, knowledge and full technical back up to succeed in Smart Repair.

**WE OFFER ALL OUR CUSTOMERS, NOT ONLY A FULL SUITE OF SMART REPAIR SOLUTIONS BUT AS PART OF OUR BUSINESS WE PRIDE OURSELVES IN OFFERING INDUSTRY LEADING:-**

- ✓ Smart Repair Sales Training
- ✓ Marketing
- ✓ Workforce Development
- ✓ Costings
- ✓ Health & Safety
- ✓ Smart Repair Consultancy
- ✓ Smart Repair Product Training





## ALLOY WHEEL REPAIR

Our products and equipment lead the way in static and mobile alloy wheel repair.

With over 90% of new cars being fitted with alloy wheels as standard, which although cosmetically appearing far superior to the older style wheels, are very susceptible to either kerb or pothole damage.

## WINDSCREEN CHIP REPAIR

Our systems and training allow you to repair minor damage before the damage "creeps" thus returning the windscreen to its original strength preventing windscreen replacement.

## INTERIOR REPAIR

The most common form of interior damage is cigarette burns and key punctures to the leather or cloth as well as trim and dashboard damage with holes from phone mountings and general wear and tear to trim panels as well as leather seat bolsters.

Our products can repair all of these back to a nearly new standard.

## PAINT & SCUFF REPAIR

Chips, scratches, cracks and bumper scuffs are both unsightly and have a negative effect on the cosmetic appearance and subsequent value of a vehicle.

Our vast selection of kits, products, equipment and paint repair consumables offers you state of the art repair technology at industry competitive pricing.

## DENT REPAIR

Our range of Paintless Dent Removal (PDR) equipment includes a bespoke kit selection that can be customised to your exact requirements.



# PAINT & SCUFF REPAIR

Save time/same day turnaround    Cheaper material costs    Enhanced throughput    Can be performed on a mobile basis    Database of over 60,000 colours

What is Smart Paint & Scuff Repair? This is generally no larger than an A4 piece of paper (size of repair area), should be contained within a single panel, ideally performed on vertical panels and only to be of a cosmetic nature.

We offer a full range of Smart specific equipment, training and products that with the correct training will allow technicians to repair cosmetic damage to various panels on a vehicle back to a showroom condition.

We supply paint systems that give the user a database of over 60,000 colours used on vehicles worldwide.



Automotive Repair Systems offer a flexible approach to our customers Smart Repair Training requirements, we can create bespoke Smart Repair Training Programmes to suit your needs.

## PAINT REPAIR TRAINING

- Training on cosmetic repairs to colour coded parts on the vehicle
  - Training on cosmetic repairs to textured parts on the vehicle
  - Plastic welding
- Automotive Repair Systems offers an extensive range of Smart Repair Training Programmes. We also offer IMI accredited assessments.

<b>PREVIOUS EXPERIENCE</b>	<b>BODYSHOP (PREP &amp; SPRAY)</b>	<b>PREPPING OR SPRAYING</b>	<b>NO EXPERIENCE</b>
	■ □ □ □ □ □	■ ■ ■ □ □ □	■ ■ ■ ■ ■ ■ +
<b>TRAINING DURATION (DAYS)</b>			





**250<sup>ML</sup> PAINT & SCUFF SYSTEM**

Available systems 

We supply a range of paint systems that give the user a database of over 60,000 colours for use on vehicles worldwide.

All of the paint systems that we provide are waterbased and compliant to the DEFRA VOC regulations.

We also supply all compliant ancillary products to support the paint systems.



DEVILBISS SRI PRO LITE

**PLASTIC STAPLE KIT (INC 6 TYPES OF STAPLES, 100 OF EACH)**

The staple kit is a must for all repairers that have to repair cracked bumpers, light fittings, motorbike fairings etc. This unique kit has revolutionary staples that are pre-cut and allow repairs to be carried out from the front (not always having to remove the damaged part), as the staple does not need to be cut with tools, they are just snapped off with the use of fingers. This can be a time saver especially when repairing bumpers.

The kit comes with 6 styles of staples, each having 100 in a pack. The staple gun has multiple heat settings and a soldering iron attachment for tacking the plastic back together before stapling.

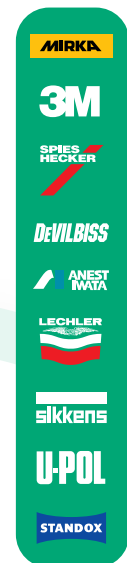
- ✓ Energy efficient
- ✓ LED illuminated
- ✓ Pre-cut easy snap staples
- ✓ Under 10 second heat time
- ✓ Suitable for a variety of plastics
- ✓ Multi directional staple inserts
- ✓ Multi heating speeds
- ✓ Easy operation
- ✓ 6 staple sizes



- ✓ **SAVE TIME**  
- MOST REPAIRS CAN BE PERFORMED UNDER 1 HOUR
- ✓ **SAVE MONEY ON MATERIALS**
- ✓ **SAME DAY TURN AROUND**
- ✓ **CAN BE PERFORMED ON A MOBILE BASIS**
- ✓ **ENHANCE THROUGHPUT**

**We supply...**

- ✓ **EQUIPMENT**
- ✓ **ACCESSORIES**
- ✓ **CONSUMABLES**
- ✓ **PAINT SYSTEMS**
- ✓ **MOBILE SETUPS**
- ✓ **STATIC SETUPS**



See our mobile paint repair solutions on pg 28-29



IWATA LPH 80





# ALLOY WHEEL COSMETIC REPAIR

Alloy Wheel Repair is the fastest growing area of Smart Repair. Over the past 10 years the number of cars with alloy wheels has increased considerably. With this in mind we are finding a vast increase in damaged alloy wheels requiring repair.

Smart alloy wheel repair is a process for cosmetic repair to the alloy wheel and not a repair of a structural nature, such as straightening and welding.

We offer a full range of Smart specific equipment and products that with the correct training will allow technicians to repair cosmetic damage to various styles of alloy wheels, from painted finishes to polished finishes.



Quick & effective



Save money and repair time!



Enhanced throughput



No affect to the structural integrity of the wheel



Can be performed on a mobile basis



Any size



Automotive Repair Systems offer a flexible approach to our customers Smart Repair Training requirements, we can create bespoke Smart Repair Training Programmes to suit your needs.

## ALLOY WHEEL REPAIR TRAINING

- Alloy Wheel Cosmetic repairs by hand
- Alloy Wheel Rim polishing training
- Alloy Wheel Painting

- Colour Matching training
- Blow-ins (S.M.A.R.T)
- Full face wheel painting

PREVIOUS EXPERIENCE TRAINING DURATION (DAYS)

SPRAYING & PREPPING



NO EXPERIENCE







**ALLOY WHEEL PAINT MINI MIXING KIT**

Why have the expense of carrying many litres of different wheel silvers, when this scheme will allow you to mix the majority of alloy wheel colours in the market today.

With only 50ml-70ml of paint required to colour the face of a wheel, this kit helps save you money on wastage too.

**WHEEL EXTRACTION UNITS**

- ✓ Portable spray extractor for use in a van or in a workshop
- ✓ Small floor footprint
- ✓ Wheel turntable included
- ✓ Sealed light fitting as standard
- ✓ 3.0m of flexible duct included, diameter - 250mm
- ✓ Extract capacity 1.2.³s⁻¹
- ✓ Runs off 240V supply, 3.0m of cable with 3 pin plug provided



DOUBLE WHEEL EXTRACTOR



**SINGLE WHEEL SHOT BLAST CABINET**

Available as Suction or Pressure fed. Both run from single phase. Media available from 60-240 grit.

Suction Fed Pressure: 4-5 bar (with pressure relieve valve)  
Media capacity: 3kg

Pressure Fed Pressure: 8-10 bar  
Media capacity: 25kg

**We supply...**

- ✓ EQUIPMENT
- ✓ PAINT KITS
- ✓ ACCESSORIES
- ✓ CONSUMABLES
- ✓ EXTRACTION BOOTHS
- ✓ MOBILE SETUPS
- ✓ STATIC SETUPS



BEAD BREAKER



See our mobile wheel van installation solutions on pg 28-29

SINGLE WHEEL EXTRACTOR



# ALLOY WHEEL STRIP TANKS

## THE SMARTER & SAFER WAY TO STRIP ALLOY WHEELS

Our custom built Alloy Wheel Strip Tanks used with an eco-friendly hot clear stripper allows the user to strip any size and style of wheel. Most German manufacturers wheels take an average of 2-3 hours to strip.

We produce custom built alloy wheel stripping tanks to cater for any size business, based around an eco-friendly wheel stripper heated to 65-90°C to strip paint from alloy wheels returning them to base alloy.

- ✓ CAGE & CHOICE OF HOIST (MANUAL/ SEMI/ELECTRICAL)
- ✓ CHOICE OF SINGLE OR TWIN CAGE
- ✓ CONSTRUCTED FROM 304L STAINLESS STEEL & LAGGED WITH 75MM LAGGING
- ✓ MESH TRAYS IN BASE
- ✓ LAGGED LID WITH HANDLE & GAS STRUT
- ✓ CONTROL PANEL W/ TEMP GAUGE AVAILABLE
- ✓ 1 kW HEATING ELEMENTS MOUNTED INSIDE WALLS, NOT IN DIRECT CONTACT WITH THE FLUID



Strips any size or style



Eco friendly stripper



Heat activated stripper



Tanks are fully installed



No filter press required



### FLOOR STANDING MANUAL LOAD TANKS

4 wheel

8 wheel

10 wheel

### ELECTRIC HOIST TANKS

8 wheel

12 wheel

16 wheel

20 wheel

24 wheel

BESPOKE TANKS ALSO AVAILABLE





# INTERIOR LEATHER & PLASTIC REPAIR

Fenice Automotive Midi Kit allows you to achieve a professional leather finish and is now available at Automotive Repair Systems!

Ideal for Smart Repairers, not only allowing you to carry out cosmetic Smart Repairs quickly and easily, it also has the products to allow complete colour changes to leather. Enabling you to undertake Smart Repairs, full leather refurbishments and customisations to leathers and plastics.

The state of the art system is designed for the care of car interiors: a complete system for the protection, cleaning, repair and reconstruction of passenger seats and interiors on leather and plastic.

The high performance products, conforming to specifications used by car manufacturers. All to achieve a result worthy of a true expert.

The colours are water-based polyurethane binders with high flexibility. In addition, there are also high-strength elastic fillers, feel modifiers, special adhesives, catalysts, pigments and fragrances which return interiors to their original scent.



Save time/same day turnaround



Cheaper material costs



Enhanced throughput



Can be performed on a mobile basis



Automotive Repair Systems offer a flexible approach to our customers Smart Repair Training requirements, we can create bespoke Smart Repair Training Programmes to suit your needs.

## LEATHER & PLASTIC REPAIR TRAINING

- Fenice - Leather Restoration Training
- Interior Trim Repair Training
- Leather Repair Training

Automotive Repair Systems offers an extensive range of Smart Repair Training Programmes.

COURSE PREVIOUS EXPERIENCE

LEATHER/PLASTIC NO EXPERIENCE

LEATHER/PLASTIC SPRAYING & PREPPING

TRAINING DURATION (DAYS)





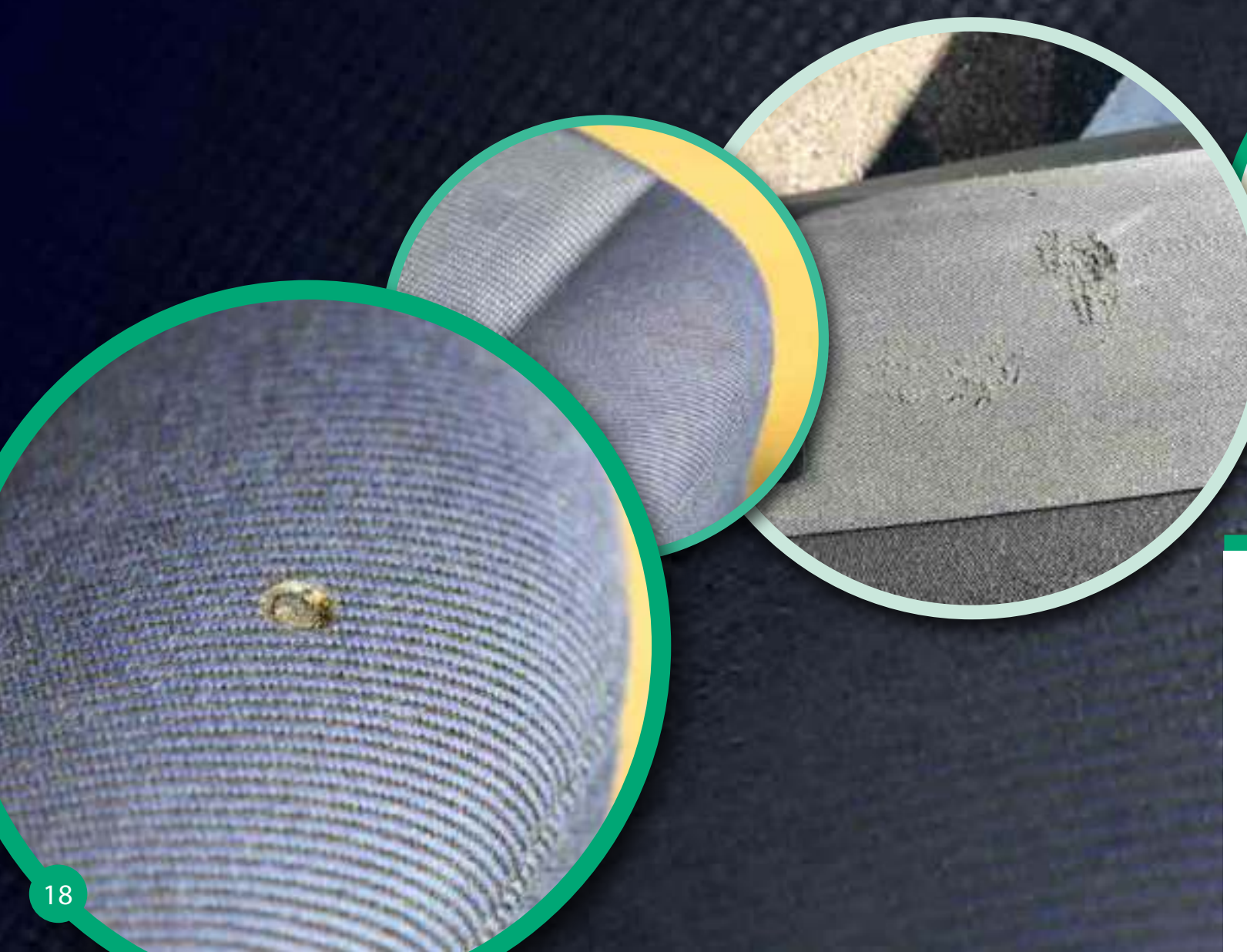
# FABRIC REPAIR

The fabric repair system is made up of various colours of velour fibres that can be mixed together to make many various colours. The kit enables a technician to repair velour and most other fabrics.

Designed specifically for repair on all vehicle fabrics, this is also perfect for upholstery repairs in caravans, boats, pubs, restaurants, households and offices.

## VELOUR REPAIR IS USED ON:

- ✓ CIGARETTE BURNS
- ✓ SNAGS AND PULLS
- ✓ SMALL CUTS AND TEARS



Automotive Repair Systems offer a flexible approach to our customers Smart Repair Training requirements, we can create bespoke Smart Repair Training Programmes to suit your needs.



Save time/same day turnaround



Cheaper material costs



Enhanced throughput



Can be performed on a mobile basis



## INTERIOR REPAIR TRAINING

- Fenice - Leather Restoration Training
  - Interior Trim Repair Training
  - Leather Repair Training
  - Fabric Repair Training
- Automotive Repair Systems offers an extensive range of Smart Repair Training Programmes.

**COURSE** VELOUR/FABRIC

**PREVIOUS EXPERIENCE** NO EXPERIENCE NEEDED

**TRAINING DURATION (DAYS)** ■ □ □ □ □



# GLASS REPAIR

## CORDLESS GLASS KIT LED UV CURING

Our Professional Cordless Glass Repair Kit is the first windscreen repair kit of its kind available exclusively in the UK and Europe featuring advanced market leading and unique windscreen repair technology.

The Professional Cordless Glass Repair Kit has cordless and rechargeable 360° LED curing, cordless and rechargeable drill and four variations of windscreen repair resin ensuring that repairing windscreens has never been easier.



Save time/same day turnaround



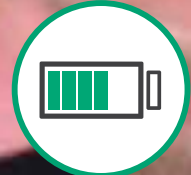
Cheaper material costs



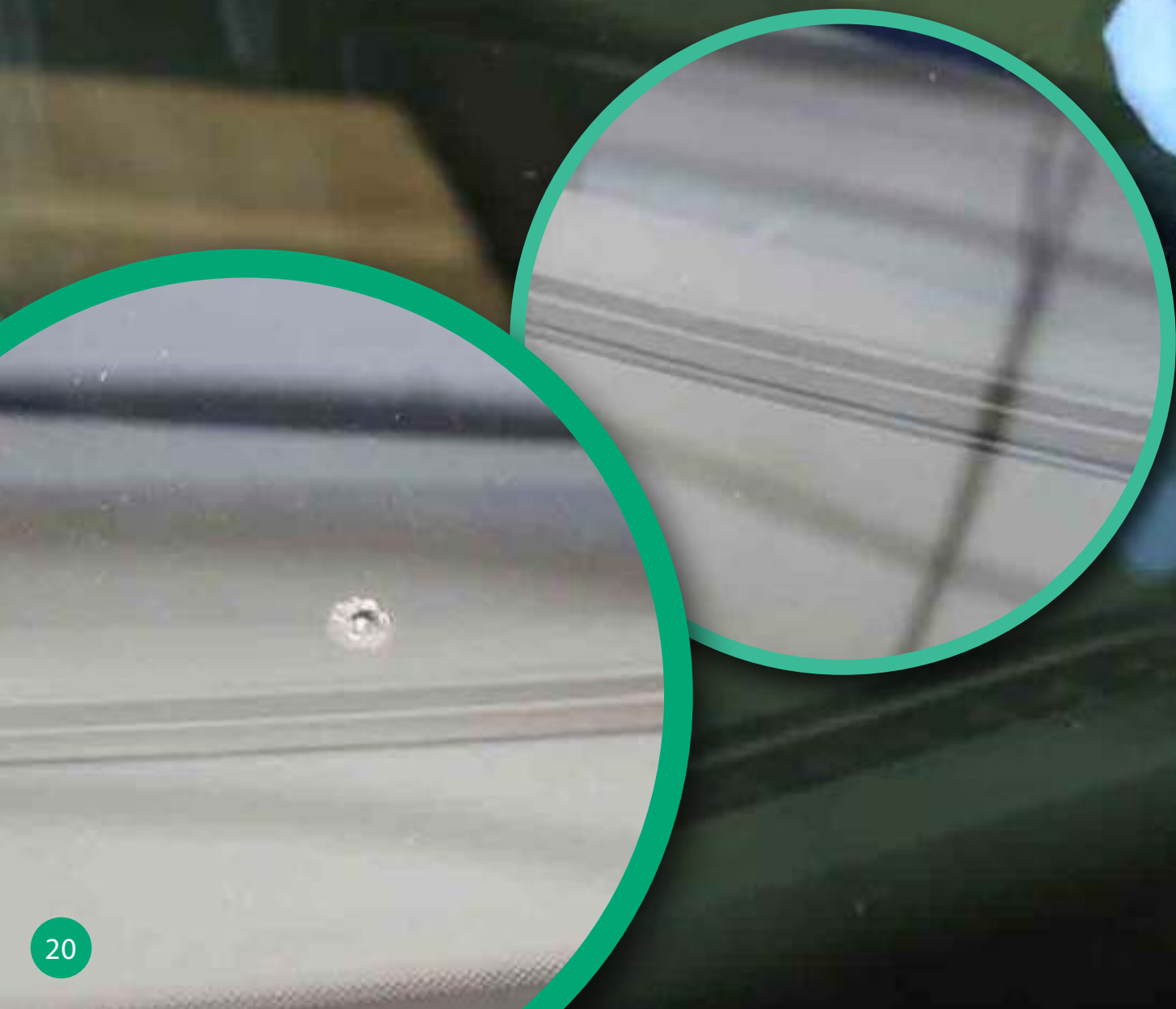
Enhanced throughput



Can be performed on a mobile basis



Cordless



Automotive Repair Systems offer a flexible approach to our customers Smart Repair Training requirements, we can create bespoke Smart Repair Training Programmes to suit your needs.

## GLASS REPAIR TRAINING

- Repairing Bullseyes
- Glass Star Break Repair Training
- Combination Glass Chip Repair Training
- Small Cracks in glass

Automotive Repair Systems offers an extensive range of Smart Repair Training Programmes.

COURSE

GLASS CHIPS

TRAINING

DURATION (DAYS)







# GLASS SCRATCH REMOVAL

## GLASS SCRATCH REPAIR KIT - FULL KIT INC. POLISHER

This kit includes all the same equipment and accessories as the Glass Scratch Repair Kit but also the addition of a polisher. Designed for use on the removal of cosmetic scratches and marks from glass.

Ideal for the annoying wiper marks, vandalism or general scratches to glass anywhere on the vehicle. Contained within the kit are all the products required for the removal of scratches and cosmetic damage.



### Glass Scratch Repair



Automotive Repair Systems offer a flexible approach to our customers Smart Repair Training requirements, we can create bespoke Smart Repair Training Programmes to suit your needs.

### GLASS SCRATCH REMOVAL TRAINING

- Removal of wiper blade marks
  - Removal of acid etch damage
  - Removal of general glass scratches
- Automotive Repair Systems offers an extensive range of Smart Repair Training Programmes.

<b>COURSE</b>	<b>GLASS SCRATCH REPAIR</b>
<b>TRAINING DURATION (DAYS)</b>	<input checked="" type="checkbox"/> <input type="checkbox"/> <input type="checkbox"/> <input type="checkbox"/> <input type="checkbox"/>



# PAINTLESS DENT REMOVAL



Quick & effective



Minimal consumable cost



Not affected by weather



Can be performed on a mobile basis

Paintless Dent Removal (PDR) is a repair process for removing minor dents and dings from the body of a motor vehicle, using specific skills and techniques with specialist tools.

A variety of damage can be repaired using the PDR method as long as the painted surface is not damaged.

- ✓ MINIMAL CONSUMABLE COSTS
- ✓ NO PAINTING REQUIRED  
- KEEPING THE ORIGINAL FACTORY PAINT
- ✓ DOES NOT AFFECT THE STRUCTURAL INTEGRITY OF THE VEHICLE
- ✓ QUICK AND EFFECTIVE
- ✓ CAN BE PERFORMED ON A MOBILE BASIS
- ✓ NOT EFFECTED BY WEATHER

Automotive Repair Systems offer a flexible approach to our customers Smart Repair Training requirements, we can create bespoke Smart Repair Training Programmes to suit your needs.

## PDR TRAINING

- Dent Removal using PDR tools
- Glue Pulling Techniques using glue pulling tools and kits

Automotive Repair Systems offers an extensive range of Smart Repair Training Programmes. We also offer IMI accredited assessments.

### COURSE

**BEGINNER**  
No experience

**INTRODUCTORY**  
Introduction into PDR

**REFRESHER**  
For previously trained

### BESPOKE

We can customise your training or continue with follow up training

TRAINING DURATION (DAYS)





PDR KITS PUT TOGETHER  
**BY TECHNICIANS**  
 FOR TECHNICIANS

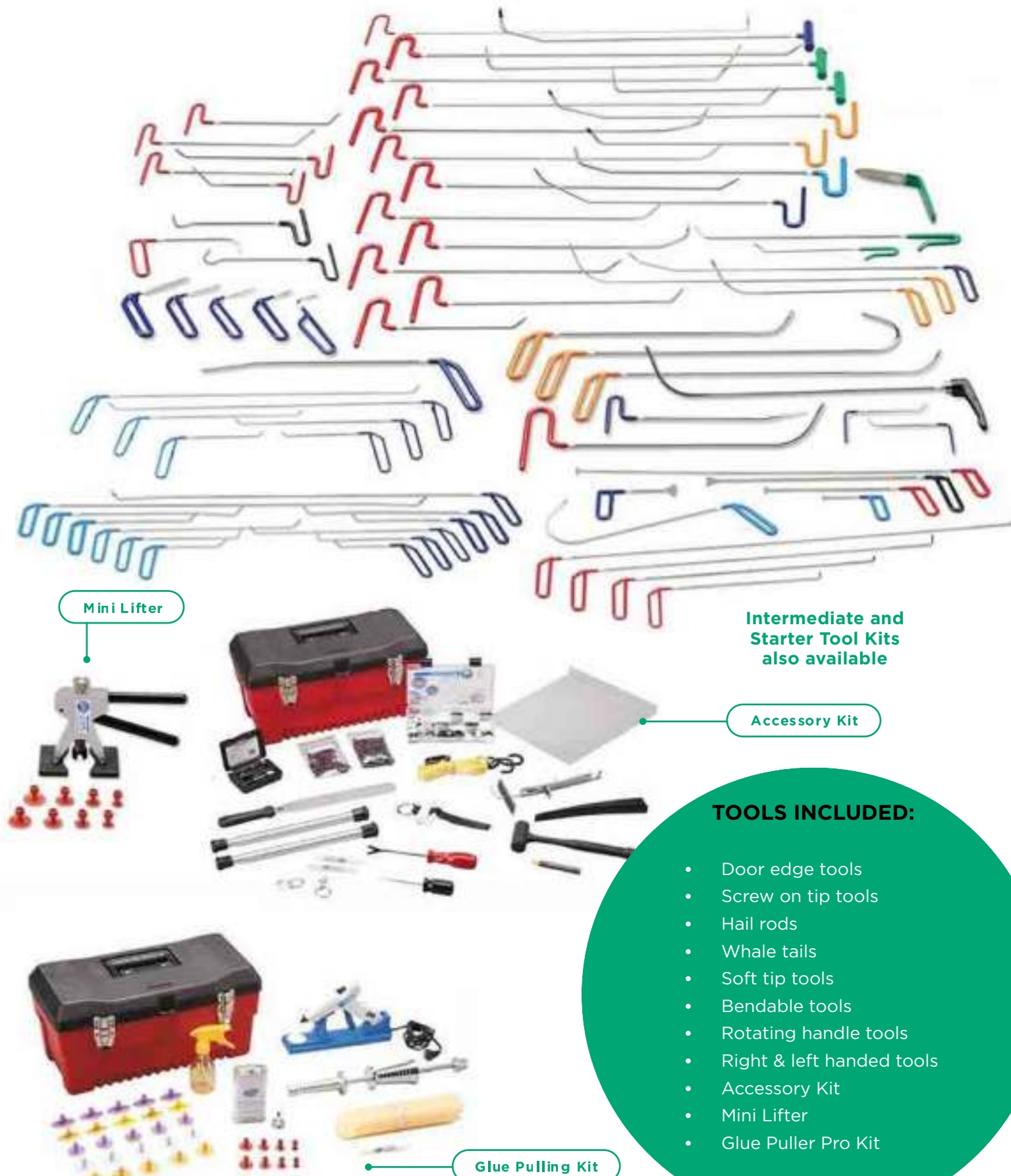


**GLUE PULLING**  
 CONSUMABLES & ACCESSORIES

COMPREHENSIVE  
 GLUE PULLING KITS  
 AVAILABLE



**75 PIECE ULTIMATE  
 MASTER TOOL SET**



- TOOLS INCLUDED:**
- Door edge tools
  - Screw on tip tools
  - Hail rods
  - Whale tails
  - Soft tip tools
  - Bendable tools
  - Rotating handle tools
  - Right & left handed tools
  - Accessory Kit
  - Mini Lifter
  - Glue Puller Pro Kit



# MOBILE VAN INSTALLATIONS

Mobile Smart Repair has been the most popular way to carry out Smart Repair for years, often technicians arrive in a van with a simple DIY bench and lots of boxes, this does not inspire professionalism or confidence. It is our opinion that first impressions count.

We have a team of Smart Repair van installation experts that can deliver a custom designed installation to your vehicle. Once we have an understanding of the processes that you want to offer (paint, dent, wheel, interior or glass repairs), we can design a detailed plan which can include ply lining, aluminium chequer plating or plastic wipe clean lining along with integrated electrical and storage systems ensuring that health and safety requirements are fulfilled.

**GIVING YOU AN EFFICIENT MOBILE WORK SHOP AND PROFESSIONAL LOOK THAT WILL IMPROVE YOUR PRODUCTIVITY AND INVOICING CAPABILITIES.**

## We can supply

- ✓ Digital Design Proofs
- ✓ Signwriting
- ✓ Professional Layout Design
- ✓ Bespoke Fitting
- ✓ HSE Compliant

### PAINT & WHEEL REPAIR

#### PAINT AND WHEEL REPAIR VAN, VIVARO/TRAFFIC SIZE:

Includes: Chequer plated sides and floor, additional bulk head, rcd board, 3 double power sockets, retractable airline, compressor, bead breaker, paint rack, large basket, litre bottle basket, aerosol rack, worktop with shelving and storage underneath as well as an additional shelf in the back above the compressor.

### PAINT & WHEEL REPAIR

#### LWB HIGH TOP PAINT AND WHEEL REPAIR VAN:

Includes: Chequer plated sides and floor, additional bulk head, rcd board, 3 double power sockets, single wheel extractor, retractable airline, compressor, bead breaker, paint rack, large basket, 2 x litre bottle basket, aerosol rack, worktop with shelving and storage underneath with a lockable cupboard, as well as an additional shelf in the back above the compressor.

### WHEEL REPAIR

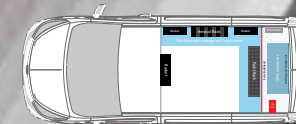
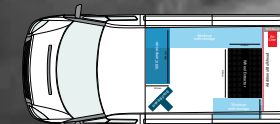
#### MWB HIGH TOP WHEEL REPAIR VAN:

Includes: Chequer plated sides and floor, additional bulk head, rcd board, 3 double power sockets, single wheel extractor, retractable airline, compressor, bead breaker, large basket, litre bottle basket, aerosol rack, worktop with shelving and storage underneath with a lockable cupboard, as well as a prep station for preparing the wheels at the back of the van.

### PAINT REPAIR

#### PAINT REPAIR VAN, VIVARO/TRAFFIC SIZE:

Includes: Chequer plated sides and floor, additional bulk head, rcd board, 3 double power sockets, retractable airline, compressor, paint rack, large basket, 2 x litre bottle basket, aerosol rack, worktop with shelving and storage underneath as well as an additional shelf in the back above the compressor.

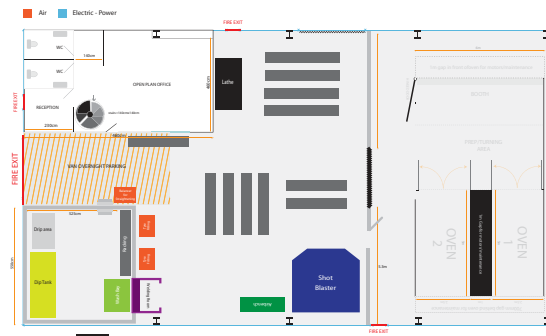
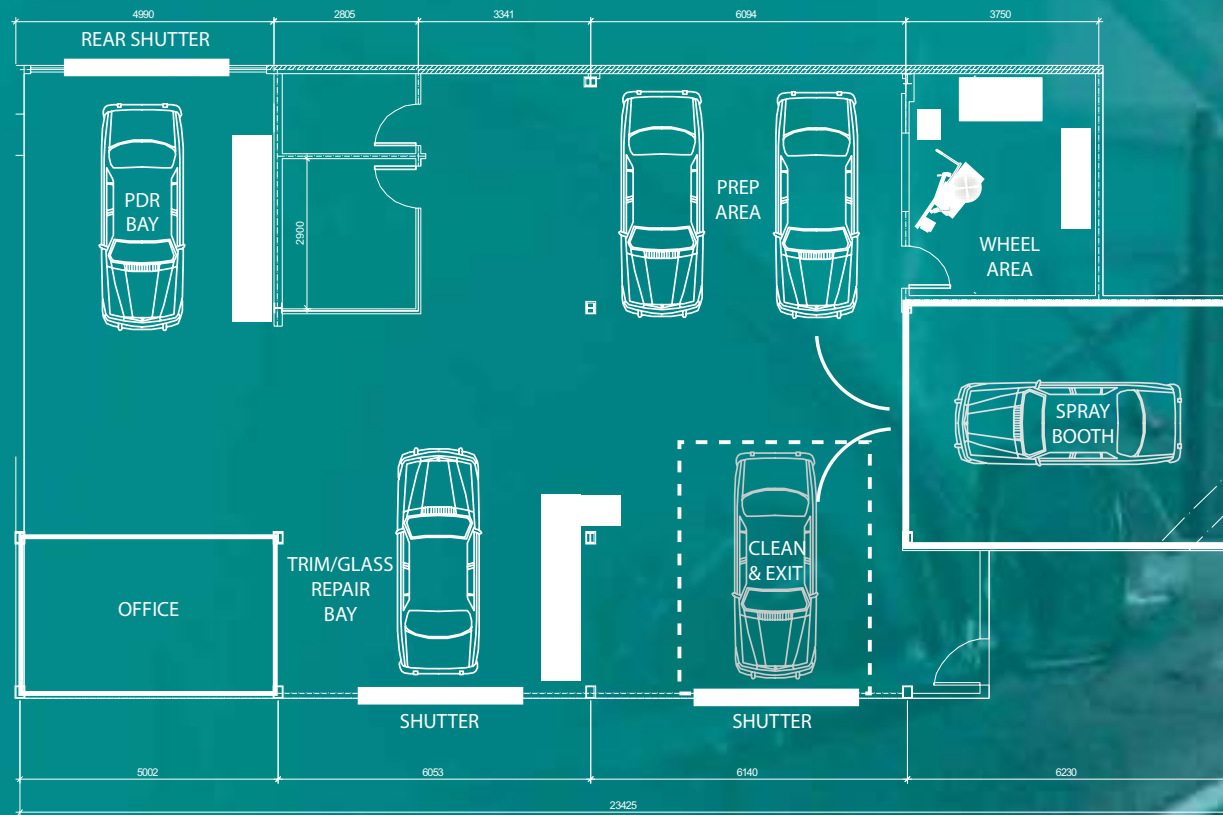




# STATIC SMART REPAIR INSTALLATIONS

Automotive Repair Systems can work around the space and environment that you have, to get the right equipment, product and training for your Smart Repair needs.

The two most important things for a static bay or installation is making sure that the Smart bay is workable and Health and Safety compliant. Our team will design the bay around both of these requirements and design you a to scale plan of the bay, giving you a better understanding of how it will look.



## EXTERNAL SPRAYBOOTH

### LIMITED ON SPACE?

Our smart repair booths house state of the art extraction and heating controls that make this an external "bodyshop on wheels".

Booths are rented only. Installation and commissioning offered as standards. Booth size: 3.8 metres x 9.1 metres.

### REQUIREMENTS

- 3 phase supply
- Level stable ground
- Additional space required for access and ramp to booth
- Gas to run the ovens



## BESPOKE EXTRACTION



- % PROFESSIONAL DESIGN
- % BESPOKE FITTING
- % HSE COMPLIANT





**THE KEY TO SUCCESS IS THE TRAINING GIVEN!**

Automotive Repair Systems offers an extensive range of Smart Repair Training Programmes. We also offer IMI Accredited Assessments. The content of each Smart Repair Training Programme has been developed over many years working alongside the IMI ensuring maximum content and delivery from our team of experienced Smart Repair Trainers.

Automotive Repair Systems training courses have been recognised across main land Europe, UAE, America and beyond.

The courses can be delivered at our fully equipped UK based Smart Repair Training Centre. Alternatively on-site training can be provided in the UK or Internationally.

To complement our extensive range of Smart Repair Training Programmes, Automotive Repair Systems offers a flexible approach to customer Smart Repair Training requirements, we can create bespoke Smart Repair Training Programmes to suit the customers needs.

**WE'VE TRAINED PEOPLE FROM A RANGE OF COUNTRIES, INCLUDING:**

- ✓ Abu Dhabi
- ✓ Australia
- ✓ Belgium
- ✓ Cyprus
- ✓ Detroit
- ✓ Dubai
- ✓ England
- ✓ France
- ✓ Germany
- ✓ Holland
- ✓ Italy
- ✓ Jamaica
- ✓ Malta
- ✓ Myanmar
- ✓ New Zealand
- ✓ Norway
- ✓ Oman
- ✓ Saudi Arabia
- ✓ Scotland
- ✓ Sweden





# ✓ ACCREDITATION

WE ARE PROUD TO ANNOUNCE THAT WE ARE NOW AN  ACCREDITED TRAINING CENTRE FOR COSMETIC REPAIR AND PAINLESS DENT REMOVAL.



**BECOME AN APPROVED IMI TECHNICIAN  
FOR COSMETIC PAINT REPAIR OR  
PAINLESS DENT REMOVAL.**

**THIS INDUSTRY APPROVED ACCREDITATION PROVIDES FORMAL  
RECOGNITION OF CURRENT COMPETENCE FOR  
AUTOMOTIVE TECHNICIANS TO AN INDUSTRY AGREED  
STANDARD AND LASTS FOR 3 YEARS.**



## COSMETIC (SMART) REPAIR

### TECHNICIANS REQUIREMENTS

Technician should be working in the industry and ideally have at least two years experience to ensure they are familiar with the skill, knowledge and techniques required.

You will be assessed on the following modules:

- ✓ Visual Vehicle Appraisal
- ✓ Mechanical, Electrical and Trim
  - (internal trim and lamp)
- ✓ Cold Filler - minor repair
- ✓ Primer - Application, Drying and Flattening
- ✓ Plastic Repair of a Cosmetic Component - Minor
- ✓ 3 Stage Pearlescent
  - Minor (Panel Preparation & Fadeout)
- ✓ Online Examination



## PAINLESS DENT REMOVAL

### TECHNICIANS REQUIREMENTS

Technicians should be working in the industry and ideally have at least two years experience to ensure they are familiar with the techniques used for PDR.

You will be assessed on the following modules:

- ✓ Visual Vehicle Appraisal
- ✓ Mechanical, Electrical and Trim
  - (internal trim and lamp)
- ✓ PDR Flat Panel Repair
- ✓ PDR Swage Line Repair
- ✓ PDR Restricted Access Repair
- ✓ Online Examination




**Contact us now for availability and pricing.**







FOR MORE INFORMATION ON OUR PRODUCTS  
AND SERVICES PLEASE GET IN TOUCH WITH US.

 0800 0897766

 [info@automotiverepairsystems.co.uk.co.uk](mailto:info@automotiverepairsystems.co.uk.co.uk)

 [automotiverepairsystems.co.uk.co.uk](http://automotiverepairsystems.co.uk.co.uk)

   @automotiverepairsystems